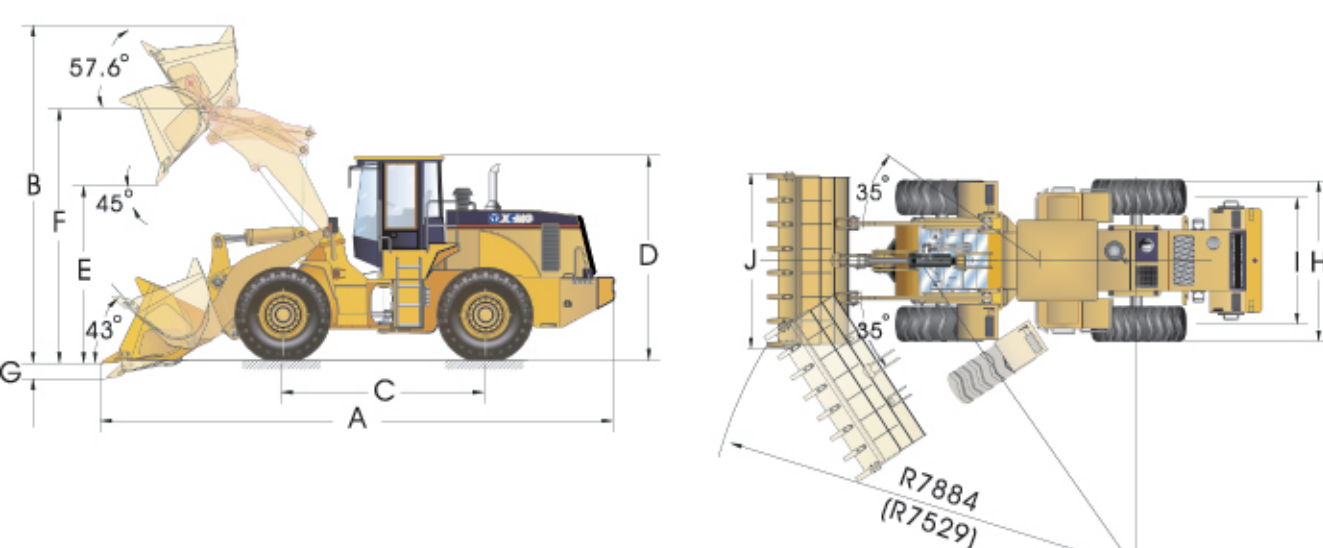


DIMENSIONS



	A	B	C	D	E	F	G	H	I	J
ZL50G	8110mm	5220mm	3300mm	3508mm	3090mm	4110mm	80mm	2800mm	2200mm	3000mm

OPTIONAL BUCKET PARAMETER

Bucket type	ZL50G			
	Rock bucket With teeth	General bucket With teeth	Light bucket With cutting edge	
Rated capacity (m³)	2.5	3.0	3.5	4.0
Struck capacity (m³)	2.1	2.6	3.0	3.4
Width (mm)	3000	3000	3000	3210
Max.dump clearance (mm)	3090	3090	2950	2950
Dump height,teeth (mm)	2980	2980		
Dump reach (mm)	1130	1130	1260	1260
Overall length (mm)	8110	8110	8160	8160
Dump clearance (mm)	5220	5220	5415	5415
Horizontal passing radius (mm)	7300	7300	7315	7415
Breakout force (KN)	170	170	144	144

STANDARD EQUIPMENT MAIN SPECIFICATIONS

Bucket type	ZL50G
Bucket capacity	3.0m³
Rated load	5000 kg
Raising time	6 secretary
Total cycling time	11 secretary
Max.drawing force	145 KN
Max.breakout force	170 KN
Articulation angle	36°
Min.turn radius	6400mm
Climb ability	26°
Wheel base	3300mm
Tread	2200mm
Dumping clearance	3090mm
Dumping reach	1130mm
L×W×H	8110×3000×3508 mm
Operating weight	18t
Clamp type	
Min.clamping diameter	φ450 / φ800 mm
Dumping clearance	3230mm
Dumping reach	1845mm
L×W×H	8414×2800×3460 mm
Operating weight	18t

ENGINE		ZL50G	
Model	WD615	Electronic QSB6.7	
Type	4-cylinder,water-cooled,in-line,direct-injection,dry-liner,turbocharged and intercooled.	4-stroke ,direct-injection ,water cooled ,exhaust turbo charger	
Rated power	162kW/205HP	152.7kW/205HP	
Rated speed	2200r/min	2200r/min	
Max torque	843N·m/1450r/min	991N·m/1400r/min	
Number of cylinders	6	6	
Bore × stroke	126×130mm(5.0"×5.1")	114×135mm(4.5"×5.3")	
Displacement	9.72L	8.27L/505.3in³	
Compression ratio	16.5:1	18:1	
Batteries	2×28V / 135A·h	2×12V / 195A·h	
Starter	24V 5.4kW	24V 7.5kW	
Alternator	28V 27A	24V 50 A	
TRANSMISSION			
Make and model	PLANETARY TYPE POWER SHIFT	HANGZHOU 4WG180	ZF 4 WG200
Type	Single lever control		
Forward speeds	km/h (MPH)		
1st	11.5/165	6.5/3.99	6.5/3.99
2nd	37	11.6/75	11.6/75
3rd	24.0/14.74	24.0/14.74	24.0/14.74
4th	38/23.33	38/23.33	38/23.33
Reverse speeds	km/h (MPH)		
1st	6.5/3.99	6.5/3.99	6.5/3.99
2nd	11.6/75	11.6/75	11.6/75
3rd	24/14.74	24/14.74	24/14.74
AXLE			
Model	Meritor 20/18 MRF-C216NZNZF		
Driving system	Four-wheel driving		
Rear axle oscillation	Center oscillation		
Carrier assembly-Reduction ratio	4.625		
Wheel end reduction assembly-Reduction ratio	4.94		
Brake			
Type	Air-over-hydraulic disc on four wheels brakes		
Driving brake system pressure	0.686 - 0.784 Mpa		
Emergency and stopping system pressure	0.45 Mpa		
Parking brake	Inner-expanding shoe brake, air cylinder and spring energy reserve applied via a switch on the control stand panel.		
TIRES			
Type	Tube		
Specification	23.5-25-16PR (L3)		
Specifications for working hydraulic system			
Working pump (gear)	100ml/r		
Max. flow rate	17.5MPa		
Max. working pressure	Pilot		
Control	Bore × stroke		
Double-acting hydraulic cylinders	160mm(6.3") × 85mm(3.3")		
Loader arm	180mm(7.1") × 567mm(22.3")		
Bucket			
Operating time	6.5sec		
Lift	3.5sec		
Lower	1.5sec		
Dump			
Specifications for steering hydraulic system			
Type	Articulation, fully hydraulic power steering with flow-amplified system		
Steering pump (gear)	63ml/r		
Max. flow rate	16MPa		
Max. working pressure			
Cylinder	90 × 340mm		
Bore × stroke	±36°		
Max. steering angl			
SERVICE REFILL CAPACITIES			
Fuel tank	230 liters		
Engine oil	22 liters		
Cooling system	50 liters		
Transmission	28 liters		
Hydraulic tank	200 liters		
Axle	38 liters		
Brake	6kg		

XUZHOU CONSTRUCTION MACHINERY GROUP IMP.&EXP. CO., LTD

Add: XCMG Headquarters, Xuzhou Economic Development Zone, Jiangsu, China 221004
 Tel: European & American Dept. +86-516-87739238 Middle East Dept. +86-516-87739202
 Asian Dept. +86-516-87739234 Central Asian Dept. +86-516-87739239
 American & Oceania Dept. +86-516-87739237 African Dept. +86-516-87739222
 Fax: +86-516-87739230
 E-mail: sinomac@public.xz.js.cn
 www.xcmg.com

Please contact with our district agent:

Materials and specifications are subject to change without notice.



ZL50G WHEEL LOADER



Bucket Capacity	3.0CBM
Rated load	5000kg
Dumping Clearance	3090mm

ZL50G WHEEL LOADER



CAB & CONTROL SYSTEM

Integral FOPS & ROPS cab of wheel loader has many advantages such as spaciousness, assemble convenience, safety and reliability, noise reducing, and excellent visibility. Owing to ergonomic design, the environment of the cab and control system is excellent, so as to make operation convenient and reduce driver's working intensity.

- ◆Excellent all-around visibility, the larger windshield class without non-metal frame, adopts adhesion structure that forward view is excellent; the tilt engine hood improves reverse view.
- ◆Adopted protect-ultraviolet radiation class and silkscreen press sunshade film that prevents damage of driver's eyes and skin from sunlight.
- ◆Equipped with luxury seat that designed for maximum comfort and fully adjustable support.
- ◆Excellent sealed ability of cab in which heating and cooling air-conditioner provide driver a good operation environment.
- ◆Instrument panel and operation component arranged Rational make operation convenience.
- ◆Equipped with front-wiper, rear mirror, lamp, cup-seat and optional radio, back-wiper alert lamp.



MONITORING SYSTEM

All gauges and warning lights enable the operator to know the whole system state of the running machine. Neat layout of controls and instruments enables the operator to concentrate on the work at hand with less distraction. Warnings are visible and audible.



AXLE

MERITOR axle is introduced from well-known technology of MERITOR in U.S.A. Large, heavy-duty axles protect internal components from the harsh environment and offer excellent serviceability and maintenance.

Axle made by Volvo heavy equipment (KOREA) is equipped with glide-restraining differential, and wet multi disc brakes, and having the maintenance-free advantage. It is featured with huge carrying ability, reliable performance, and long life.



BRAKE SYSTEM

New type brake system in wheel loader adopts double pedal. The left pedal doesn't cut off power while the right cuts off power. The merging of parking brake and emergency brake has some functions such as: cutting off power, automatic starting-up and working, and protection of low air pressure.



FRAMES

The structure of front and rear frames is simple, reducing stamping and irregularity weld line, optimum the important position, for bearing force can bearing various job conditions torque and striking load. The increased span of the pin decreases stress. Dustproof articulated points to prolong the center pin's life. The double thrust bearings are placed on the articulated parts to increase the driving stability. Front frame rigid, supporting for boom and cylinder, can absorb vibration and impact force.

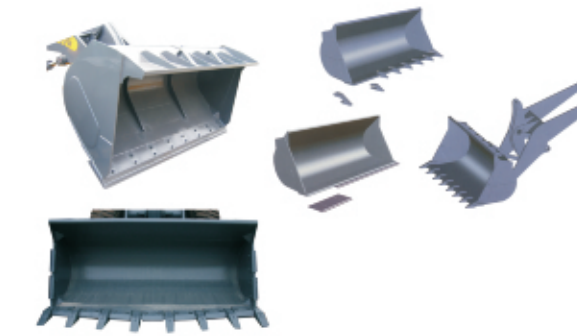


CLAMP

It is suitable for loading, transporting piling the various logs, other longer material and elements. Optional equipment log fork or log clamp for variable working conditions.

MAINTENANCE & SERVICEABILITY

The design of wheel loader makes daily maintenance easy. Oil levels checking, new oil and grease be refilled for easy accessorily, and filter element, electric system remove and replace. The unitary-folding hood cover easy for engine repair is controlled by the electric switch and pushed up by the cylinder. The side door open easily for engine oil level checking and replace element.



BUCKET & WORKING DEVICE

Optimized working device, articulated points disposed rationally, single rocking arm, short pull rod, particular Z-bar roll-back linkage reduce shock, operation intensity and improve working efficiency. The bucket automatic leveling on any position, don't need adjust it when working again. Effecting working devices with optimized design automatic leveling and siding block, carrying ensure limited position and boom compact prevent the materials off, and working device from strike. Dual layer is dust-preventing. Each articulated point of wheel loader working. It's available to prevent dust and to assure the viscosity of the lubricating oil. Offer buckets, available to different conditions.

HYDRAULIC SYSTEM

Working and steering hydraulic system adopts the double-pump flow technology, reducing energy loss, and increasing reliability. Pilot operating hydraulic system makes operation easy and flexible. Steering system adopts flow-amplified with hydraulic limited position. Being able to improve sucking oil of pump and prevent oil from pollution, hydraulic oil tank is completely sealed.



SAFETY BLOCK

CE required safety block.

