

TB145

FULLY HYDRAULIC COMPACT EXCAVATOR



TAKEUCHI

TAKEUCHI

THE HIGH SPEED TB145 MINI



**SUPERB
OPERATOR
COMFORT**



PECIFICATION EXCAVATOR

The Takeuchi's TB145 offers performance and operator comfort at an operating weight of 4760kg. Featuring two speed travel on rubber tracks with a powerful economical 27.9kW. diesel engine, it is kitted out with a fully fitted cab which includes AM/FM radio and heater, and the smoothest controls in the business.

The fully tilting cab allows superb access for ease of maintenance.

Compare the standard features with the competition, add the legendary Japanese build quality and reliability, and there's really no contest.

EASY ENGINE ACCESS AND MAINTENANCE



STANDARD FEATURES

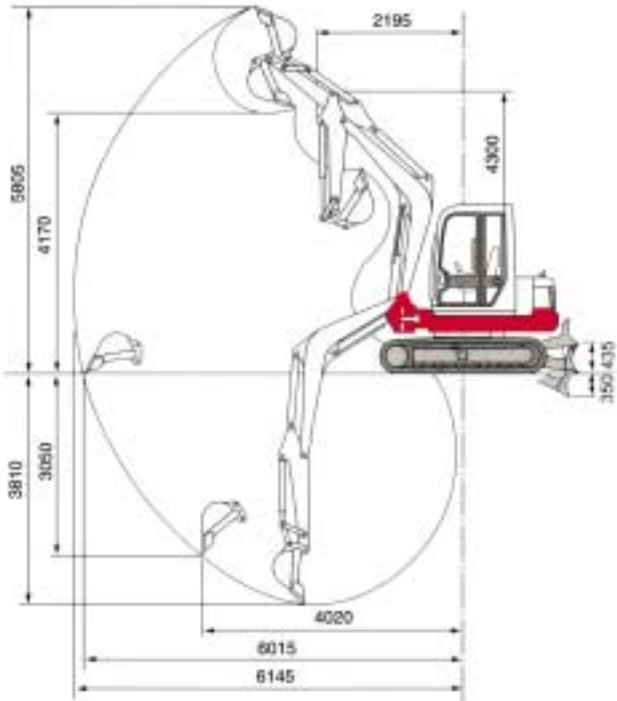
- Tilttable TOPS/FOPS cab
- Electrohydraulic push button control of auxiliary hydraulics
- Emergency engine shutdown/return-to-idle system
- Electronic engine monitoring system
- Cast iron, wrap around protective counterweight
- Steel engine cover
- Automatic fuel bleed system
- Variable displacement piston pumps
- One touch engine decelerator
- Safety lockout lever for travel and operating controls
- Remote slew lubrication system
- Two speed travel
- Two-way auxiliary hydraulics plumbed to dipper arm
- Double flanged track rollers
- Spring applied, hydraulically released disc type slew and parking brakes
- Precise response, proportional main control valves
- Simultaneous operation of cab swing and two digging functions with no reduction in speed
- Straight travel with simultaneous operation of digging and swing functions
- Cushioned main boom, arm and swing cylinders
- Hydraulic oil cooler
- Protective routing of bucket and arm cylinder hydraulic hoses
- Pilot operated joystick controls with armrest
- Main boom cylinder guard
- Low noise level and EPA exhaust emission compliant engine
- Engine oil 'Safedrain' system
- Fully adjustable suspension seat with retractable seat belt
- Vandalism protected lockable fuel tank and engine compartment
- Lockable operator's manual and storage compartments
- Boom mounted work lights
- Side mounted swing lights
- Short pitch rubber tracks

OPTIONS

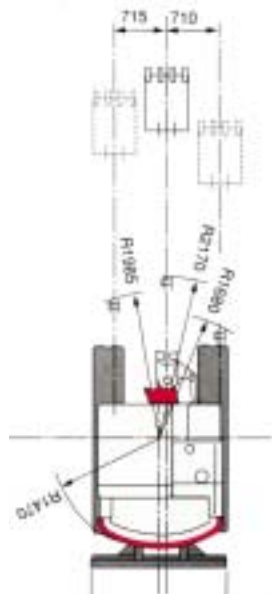
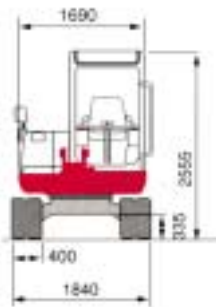
- 3 Year Warranty
- TKB201 Hydraulic Breaker
- Steel tracks
- Auger
- QuickHitch

TB145

OPERATING RANGE



In accordance with our established policy of constant improvement, we reserve the right to amend these specifications at any time without notice. Photographs shown may feature non-standard equipment.



All Dimensions unless otherwise stated are in millimeters

DIMENSIONS & WEIGHT		OPERATING INFORMATION	
Operating Weight (kg)	4740	Max. Dig Depth	3810
Length (transport)	5520	Max. Dump Height	4170
Width	1840	Max. reach at ground level	6015
Height	2555	Max. Vertical Dig Depth	3050
Ground Clearance	335	Max. Bucket Dig Force (Kn)	36.5
Min front swing radius (80° boom swing)	1680	Max. Arm Dig Force (Kn)	25.4
Tail swing radius	1470	UNDERCARRIAGE	
Dozer Blade (wxh)	1840x430	Traction Motor	Axial Piston
ENGINE		Traction Drive	Planetary
Make/Model	Yanmar4TNE88-TB	Traction Brake	Disc
Rated Output/RPM	27.9kW/2300	Track Width	400
Maximum Torque	145.1Nm	Ground Contact Length	1985
Cylinders/Displacement	4/2190cc	Ground Pressure (kpa)	27.3
Electrical System	12volt 40amp	Travel Speed (K/ph)	3.0/5.2
SWING SYSTEM		Maximum Gradeability	30°
Boom Swing angle (L/R)	80°/60°	HYDRAULIC SYSTEM	
Slew Speed (rpm)	9.9	Set Pressure (bar)	210
Slew Motor	Axial Piston	Pump Type	Variable(P1+P2)+Gear(P3)
Slew Brake	Disc	Hydraulic Flow (l/min)	55.9x2+32.4
		Auxiliary Flow (l/min)	59
		CAPACITIES (l)	
		Hydraulic system	115
		Fuel tank	74
		Engine Lubrication	5.8
		Cooling System	4.0

TAKEUCHI

Takeuchi Mfg (UK) Ltd, Lynroyle Way, Rochdale, Lancs OL11 3EX Tel: 01706 657722 Fax: 01706 657744
e-mail: sales@takeuchi-mfg.co.uk www.takeuchi-mfg.co.uk

Southern Office at Thatcham, Newbury Tel: 01635 877 196 Fax: 01635 877 195